

LIBROADJSTREETDRAWINGS201414.020708 - FELP ACMEDESIGNSOLID WASTE DRAWINGS CONSTRUCTION DWG(S) 14.020708 - CD PLAN - DECEMBER 13 2019 DWG PLOT DATE 19:22:2019 12:13 PM DAVE PASKO

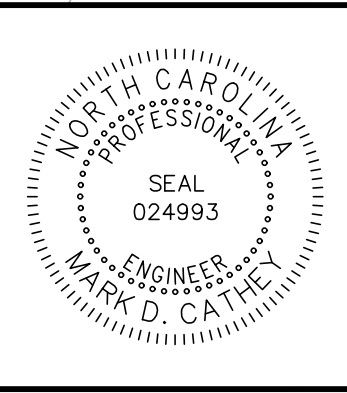
PAVEMENT OVERLAY NOTE:
 INITIAL TEMPORARY AND PERMANENT ACCESS ROAD TO RECEIVE BASE COURSE ONLY. INSTALL SURFACE COURSE NEAR END OF PROJECT WHEN ALL FINAL ACCESS ROADS ARE READY TO RECEIVE FINAL SURFACE COURSE



NOTE: SEE SHEET C-105 REGARDING ABANDONMENT OF THE EXISTING SEDIMENT BASIN AND APPURTENANCES

BID DOCUMENTS

55 Broad Street
 Asheville, NC 28801
 828.252.0575
 NC Firm License # C-0459
 mcgillassociates.com



SIGNED AND DATED:	
NO.	DATE
BY	DESCRIPTION

THIS DOCUMENT HAS BEEN DIGITALLY SIGNED AND SEALED IN ACCORDANCE WITH THE STANDARD CERTIFICATION REQUIREMENTS FOUND IN NC ADMINISTRATIVE CODE 21-58.103(E). THIS DIGITAL SIGNATURE HAS BEEN FOUND BY THE NC BOARD OF EXAMINERS FOR ENGINEERS AND SURVEYORS TO MEET THESE STANDARDS. PLEASE CONTACT THE SIGNER IF YOU NEED ASSISTANCE IN VALIDATING THE SIGNATURE.

**FRANCIS FARM LANDFILL
 RESTRICTIVE COVER IMPLEMENTATION
 HAYWOOD COUNTY**
 HAYWOOD COUNTY, NORTH CAROLINA

OFFICE MANAGER		DESIGNER	
MDC		DAP	
PROJECT MANAGER		REVIEWER	
JRB		JRB	

DATE	PROJECT #	FUNDING #
DECEMBER 2019	14.00708	N/A

SHEET
C-107